

PROTEIN LAB SERVICE

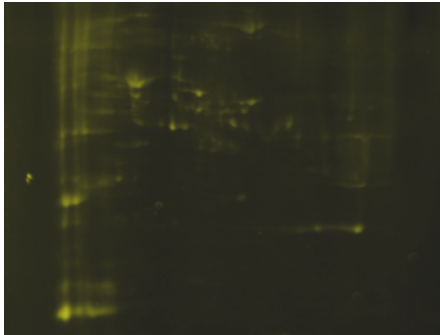
GENOMINE, Inc.

- Service item1** Phosphoprotein staining service
- Service item2** Phosphoprotein identification by PMF
- Service item3** Phosphopeptide identification by PSD
- Service item4** Phosphorylation site determination
by sequencing
- Service item5** Phosphoprotein enrichment

Tel: +82-54-223-2463 Fax: +82-54-223-2460
Email: dskimi@genomine.com
<http://www.genomine.com>
Venture Bldg 307
Pohang Techno Park Pohang , Kyungbuk,
Korea(ROK)

Service item1 Phosphoprotein staining service

Cat. No. P8010
Price 25만원/sample



Yeast cell lysate ProQ staining

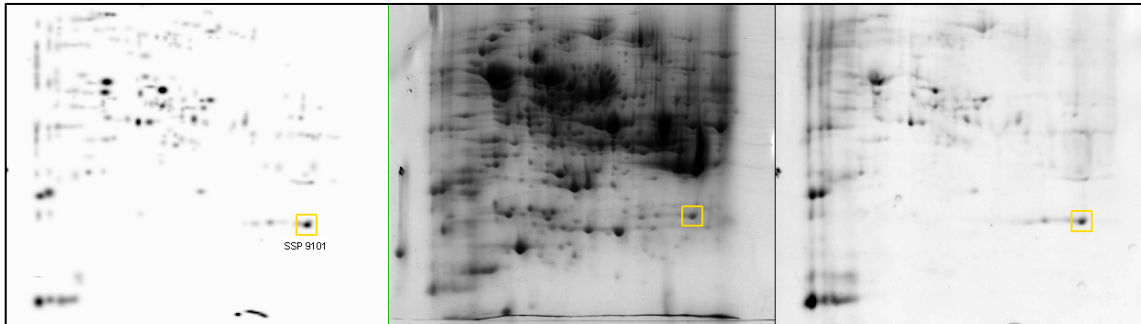
Step1 Proteome : total cell lysate
 Protein separation : 2-DE mini gel format
 1st Dimension IEF : 4-10 NL IPG(8.5cm)
 2nd Dimension slab gel : 8.5 X 8cm slab gel
Staining method :
 staining 1 : ProQ Diamond staining (Molecular Probes™)
 staining 2 : Colloidal CBB staining
Detection method : ProQ fluorescent emission (Ex/Em: 555/580nm)
 used filter : Ex/Em: Cy3/Cy3

Step2 Multiple staining & spot matching

Synthetic image

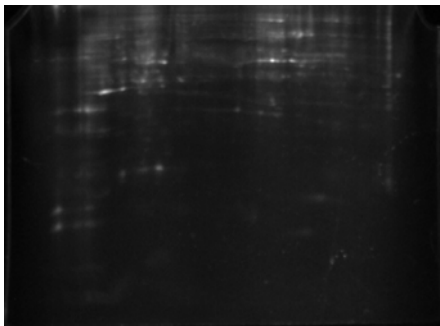
All protein staining (CBB)

Phosphoprotein staining (ProQ)



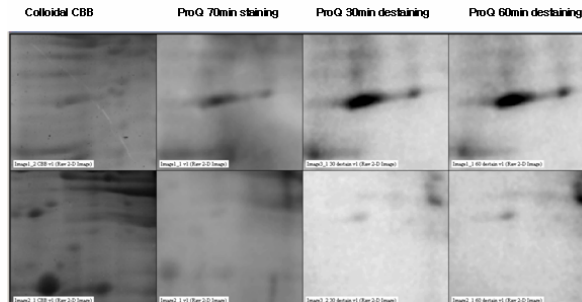
Yeast cell lysate
 IEF : 400ug protein from yeast lysate
 Detection ProQ Diamond staining & CBB

Step3 Differential display & Comparative analysis



DAE3

DAE19



Arabidopsis seedling
 IEF : 300ug protein from Arabidopsis lysate
 Detection ProQ Diamond staining & CBB

Service item3 Phosphopeptide identification by PSD

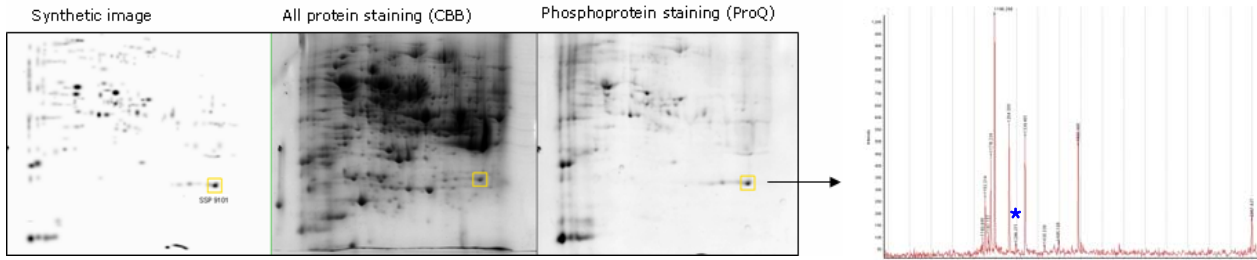
Cat. No. P8030
Price 8만원/spot

Alternative Step1: Prediction of Phosphopeptides by PMF

Alternative Step2(example) : Phosphopeptide Enrichment from ProQ-stained spots by **Phos-pep™**

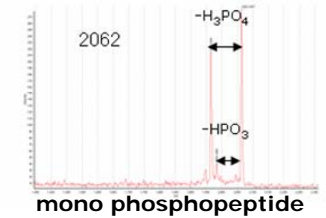
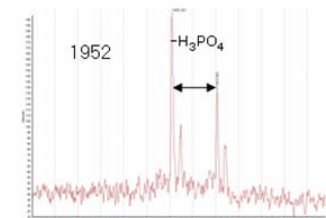
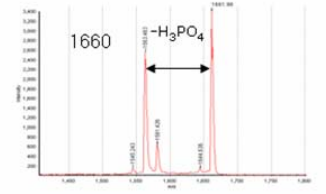
Step3 : Phosphopeptide identification by **MALDI-TOF PSD**

Alternative Step1(example)

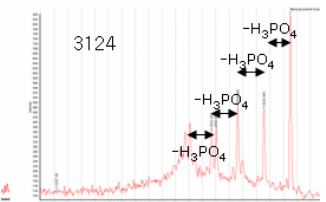


Spot ID	Protein annotation	MW/pi	Predicted phosphorylation site
9101	Protein component of the small (40S) ribosomal subu	25.08/8.6	LTNSLMMNGR (1)+HPO3@STY;

Step3



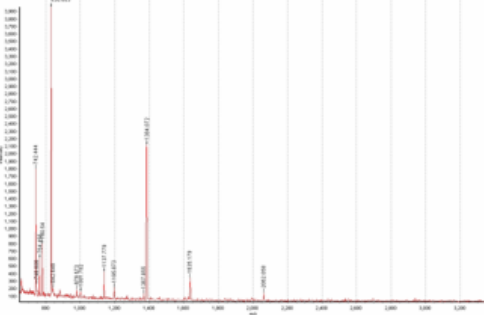
mono phosphopeptide



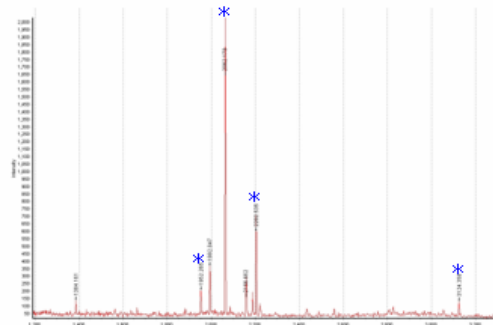
Tetra phosphopeptide

Alternative Step2(example)

Trypsin digest of beta-casein



Phos-pep™ Non-IMAC enrichment



Note : In step3, phosphopeptides could be identified by detecting loss of phosphorous(-80Da) or phosphate(-98Da) group in mass spectrometry with PSD mode

Service item4 Phosphorylation site determination by CAF sequencing

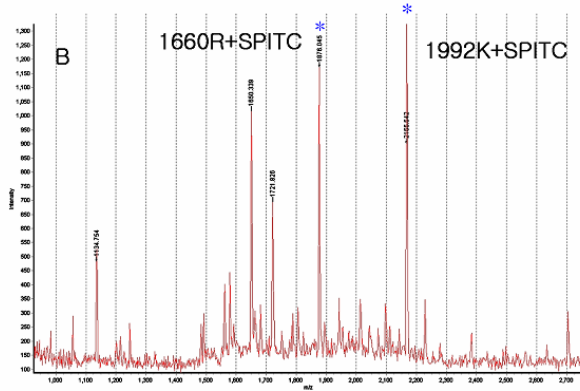
Cat. No. P8040
Price 15만원

Step1 : SPITC labeling of Trypsin digest from ProQ-stained spot

Step2 : phosphopeptide Enrichment by Phos-pep™

Step2 : CAF-sequencing and phosphorylation site determination by MALDI-TOF PSD

Step1 & 2



Step3

